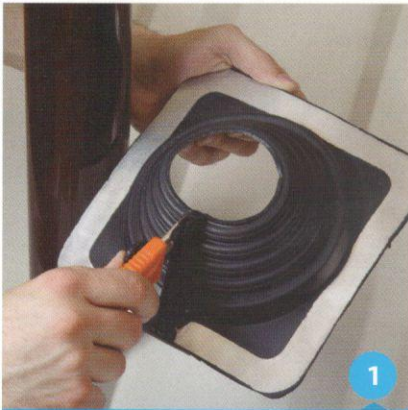
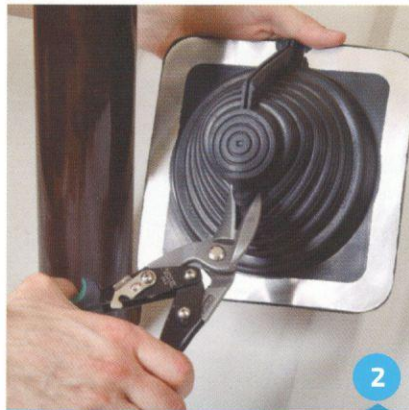


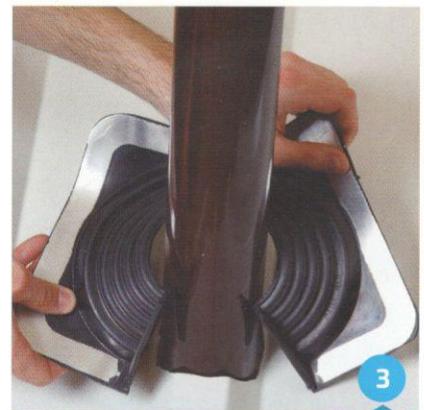
# Installation - Master Flash® Multi



1  
Select an appropriate Master Flash® Multi. If necessary trim opening to the pipe diameter.



2  
Apply Master Flash® Multi by sliding it down the pipe or cut it on the side to use as Retrofit.



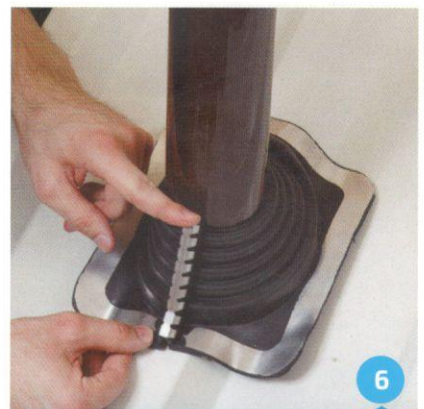
3  
Wrap Master Flash® Multi around the pipe.



4  
Press Master Flash® Multi down, bending it to conform to roof profile or roof irregularities. A blunt tool will help press the flashing into tight roof angles.



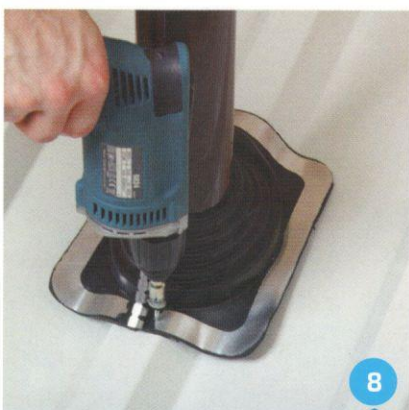
5  
Apply sealant between the base, roof and at the top of the flange.



6  
Use stainless steel clamp to close the Master Flash® Multi.



7  
Tighten the stainless steel clamp.



8  
Use fasteners to complete sealing. For installation, fastener spacing may not exceed 1.5" (38 mm).



9  
Additional sealant may be applied between the flashing and the pipe.