

Installation - Master Flash® Residential



1

Use pliers to pull the tab for the correct pipe size.



2

Finish the diameter by adjusting the flashing by hand.



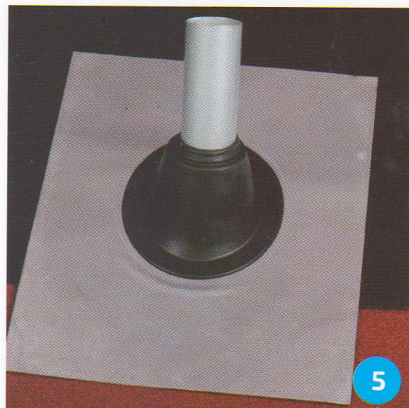
3

Apply sealant on the bottom side of the metal base.



4

Slide the flashing down the pipe.



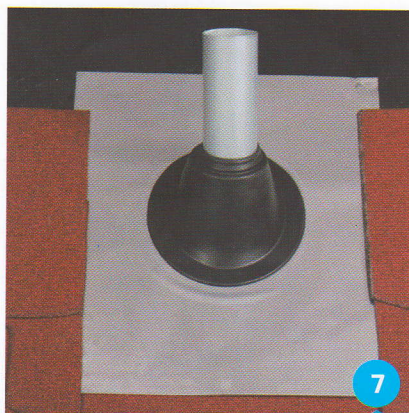
5

Cut shingles to fit to the top of the flashing allowing the bottom of the flashing metal base to set on top of tiles.



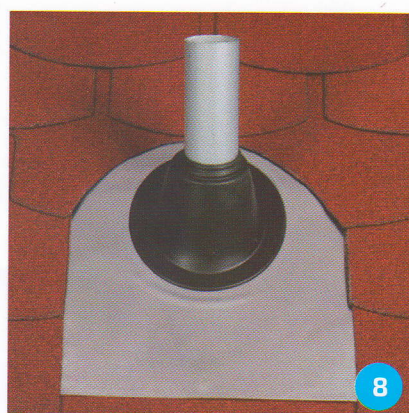
6

Fasten the metal base using nails and a hammer.



7

Install the tiles at the side of the flashing.



8

Finish the installation of tiles.



9

Apply a stainless steel band to assure tight fitting of the flashing against the pipe.