

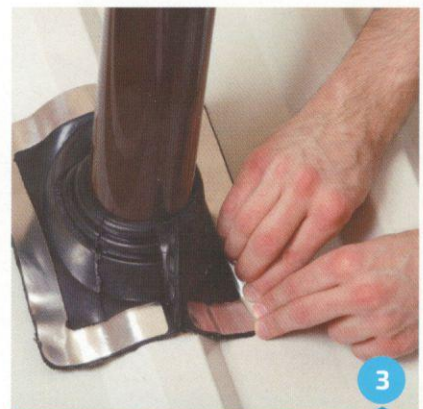
# Installation - Master Flash® Retrofit



1  
Select an appropriate Master Flash® Retrofit. If necessary trim opening to the pipe diameter.



2  
Wrap Master Flash® Retrofit around the pipe and install all snap rivets to seal the flange.



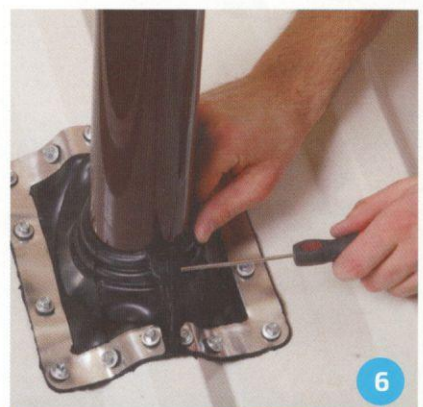
3  
Press Master Flash® Retrofit down, bending it to conform to roof profile or roof irregularities. A blunt tool will help press the flashing into tight roof angles.



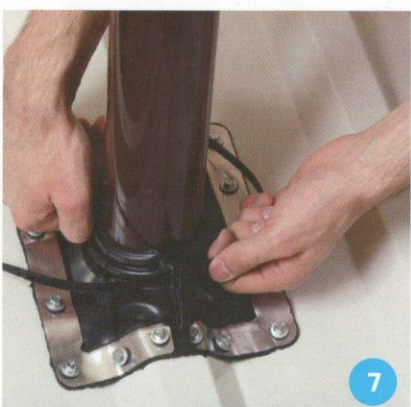
4  
Apply sealant between the base, roof and at the top of the flange.



5  
Use fasteners to complete sealing. For installation, fastener spacing may not exceed 1.5" (38 mm).



6  
Make a hole in the flange to insert a cable tie.



7  
Slide the cable tie through the hole.



8  
Put the cable through the hole to assure tight fitting.



9  
Additional sealant can be applied between the flashing and the pipe.