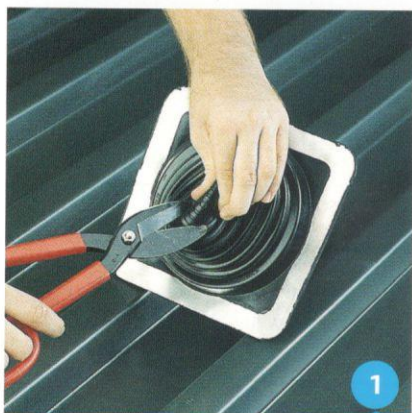
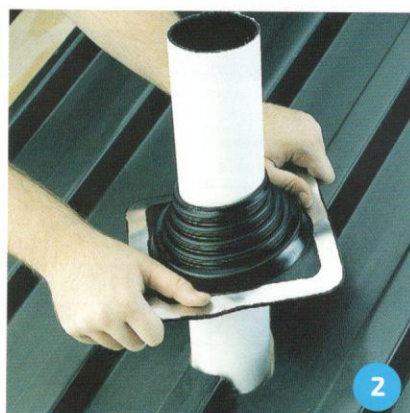


# Installation - Master Flash® Standard



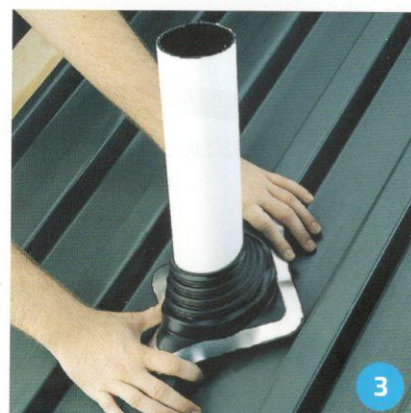
1

Choose an appropriate Master Flash® with opening at least from 20% to 30% smaller than pipe diameter. If necessary trim opening to 20% smaller than the pipe diameter.



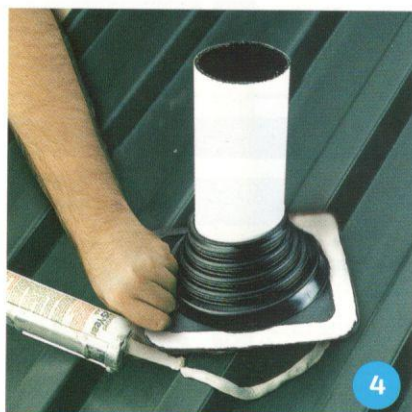
2

Slide Master Flash® down the pipe (a non-petroleum base lubricant will ease installation).



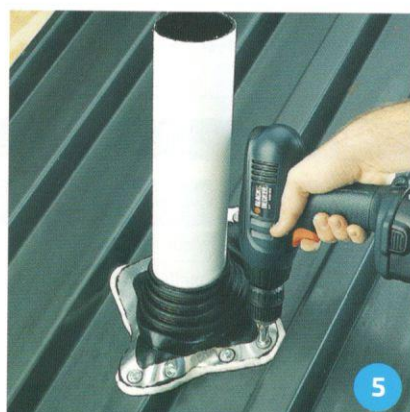
3

Press Master Flash® down, bending it to conform to roof profile or roof irregularities. A blunt tool will help press the flashing into tight roof angles.



4

Apply sealant between the base and the roof.



5

Use fasteners to complete sealing. For installation, fastener spacing may not exceed 1.5" (38 mm).